

Egg morphology of *Dioctria* (Insecta: Diptera: Asilidae) species known in Turkey*

Fatma Bayrakdar^{1,*} & Zekiye Suludere²

1. Public Health General Directorate of Turkey, Microbiology Reference Laboratories, National Molecular Microbiology Reference Laboratory, Ankara, Turkey & 2. Department of Biology, Science Faculty, Gazi University, Ankara, Turkey.

*Corresponding author, E-mail: fatma.bayrakdar@saglik.gov.tr

Abstract

The egg structures of eight *Dioctria* species known in Turkey, i.e., *D. abdominalis*, *D. arcana*, *D. cornuta*, *D. flavipennis*, *D. hermonensis*, *D. linearis*, *D. sudetica*, *D. valida* were examined and described in detail, using the scanning electron microscope (SEM). The material was collected from various habitats such as watersides, forest areas and crop fields within Adana, Aksaray, Mersin, Nigde, Karaman and Konya provinces between 2006 and 2007. *Dioctria* eggs are characterized as: 1) ovoid in shape and brown in color; 2) operculum at the anterior pole of the egg; 3) one or two micropyles at the center of the operculum; 4) aeropyles scattered in the body region and operculum or only in the former. The eggs were photographed to provide useful information to the systematics of *Dioctria* genus.

Key words: egg, morphology, *Dioctria*, scanning electron microscope, Turkey.

ریخت‌شناسی تخم گونه‌های شناسایی شده *Dioctria* (Insecta: Diptera: Asilidae) در ترکیه

فاطمه بیرکدار^{۱*} و زکیه سولودر^۲

۱- اداره کل بهداشت عمومی ترکیه، آزمایشگاه‌های مرجع میکروبیولوژی، آزمایشگاه مرجع ملی میکروبیولوژی مولکولی، آنکارا، ترکیه و ۲- گروه زیست‌شناسی، دانشکده علوم، دانشگاه قازی، آنکارا، ترکیه.

*مسئول مکاتبات، پست الکترونیکی: fatma.bayrakdar@saglik.gov.tr

چکیده

ساختار ظاهری تخم هشت گونه شناسایی شده از جنس *Dioctria* در ترکیه به نام‌های *D. arcana*، *D. abdominalis*، *D. cornuta*، *D. flavipennis*، *D. hermonensis*، *D. linearis*، *D. sudetica* و *D. valida* با استفاده از میکروسکوپ الکترونی مورد بررسی قرار گرفت و با جزئیات توصیف شد. نمونه‌ها از زیستگاه‌های مختلف مانند کنار دریا، مناطق جنگلی و مزارع محصولات کشاورزی واقع در استان‌های آدانا، آکسارای، مرسین، نجده، کارامان و قونیه در سال‌های ۲۰۰۶ و ۲۰۰۷ جمع‌آوری شدند. ویژگی‌های تشخیصی تخم‌های *Dioctria* شامل: ۱- شکل تخم مرغی و رنگ قهوه‌ای، ۲- درپوش در ناحیه پیشین قطب تخم، ۳- یک یا ۲ روزنک در بخش میانی درپوش تخم و ۴- هوا روزنک‌ها در بدنه و درپوش تخم و یا فقط در بدنه تخم پراکنده شده‌اند، می‌باشد. به منظور استفاده در سازگان شناسی جنس *Dioctria* تصاویر تخم‌ها ارائه شده است.

واژه‌های کلیدی: تخم، ریخت‌شناسی، *Dioctria*، تصویر برداری میکروسکوپ الکترونیکی، ترکیه.

دریافت: ۱۳۹۹/۱/۱، پذیرش: ۱۳۹۹/۳/۱۰.

Introduction

The eggs of insects have morphological features specific to each group, which are related to their life strategies (Hinton, 1969). Ornamentation of egg exochorion is an important feature in some insect orders (Musso, 1981; Salkeld, 1983, 1984; Lavigne & Bullington, 1984; Lawson & Lavigne, 1984; Castillo *et al.*, 1994; Suludere *et al.*, 2000). Ornamentation of exochorion can serve various functions such as protection against

* This study was published from the doctoral thesis of the first author under the supervision of the second author.

desiccation and physical damage, and the facilitation of gas exchange through structural connections to inside of the egg (Hinton, 1969, 1970). Insect egg morphology has been studied using the scanning electron microscope (SEM) in the context of identifying species and tracing origins of infestations in domestic and international trade (Kučerová & Stejskal, 2002, 2010; Hasbenli *et al.*, 2006, 2008; Dutra *et al.*, 2013).

The eggs are diverse in size and shape among asilids. Egg surface of some species lacks any structures, that of others has irregularly disposed protuberances, or is furnished with facet-like ridges, or dotted or granular (Scarborough, 1978; Musso, 1981; Lavigne & Bullington, 1984; Castillo *et al.*, 1994; Suludere *et al.*, 2000, Candan *et al.*, 2004a,b).

Musso (1981) classified asilid eggs into three types: 1. pigmented eggs with a thick chorion with irregular polygonal surface pattern; 2. unpigmented eggs with a thick chorion covered with tubercles (eggs with ornamentation), or eggs with a smooth surface and thin chorion (eggs without ornamentation); 3. eggs covered with sand grains. Type 1 is found only in the subfamily Laphriinae, type 2 is found in some species of the subfamily Asilinae, and type 3 is found in *Antipalus varipes* (Meigen, 1820).

Dioctria Meigen, 1803 (Diptera: Asilidae: Dioctriinae: Dioctriini) comprises the highest number of species in the subfamily Dioctriinae as 123 species. Of them, 93 species are Palearctic, 27 species are Nearctic, one species is Neotropical, one species is from Australia, and one species is known from Afrotropical zoogeographic regions. Thirteen *Dioctria* species are known from Turkey (Engel, 1926; Lehr, 1988; Hayat & Alaoğlu, 1994; Weinberg & Hayat, 1997; Bosák & Hradský, 2001; Geller-Grimm, 2015; Bayrakdar & Hasbenli, 2009).

Body size of adult insects of genus range from 6 to 20mm. The antennae are elongate, longer than the height of the eye. The fore tibia lacks an apical claw-like spur, the hind femora without strong bristles and the pulvilli are normally developed. Wings are relatively large, the 1st radial cell, all medial cells and posterior cubital cell are open (Richter, 1988). Among Asilidae, only the Dioctriinae possess an arched postmentum (Dikow, 2009).

This study is a part of doctoral thesis of the first author. In the present study, we examine and describe in detail the egg morphology of *Dioctria* species known in Turkey, with the aim of characterizing the egg structures and discussing the systematic issues on them.

Materials and methods

Insects were collected with a sweep net from various habitats such as watersides, forest areas and crop fields within Adana, Aksaray, Mersin, Niğde, Karaman and Konya provinces between 2006 and 2007. Collected males were killed in killing jars containing ethyl acetate. Collected females, at least two, were put in the feeding containers with a wet paper-napkin bottom, which serves as oviposition bed, to obtain the eggs. Females laid eggs in feeding

containers. Features, and altitude of the locations of the collecting sites were recorded. All the materials were deposited in Zoology Museum of Gazi University, Faculty of Science.

Collected samples were identified by referring to: Séguy (1927, 1929, 1941), Engel (1926), Duda (1940), Richter (1960, 1966, 1968, 1973), Moucha ve Hradský (1963), Hradský ve Moucha (1964), Lehr (1965, 1988, 2002), Janssens (1968), Esipenko (1971), Theodor (1980), and Geller-Grimm (2003); McAlpine (1981) was referred to for terminology.

The obtained eggs were stuck to the stub with a double-sided tape, coated with gold for 120 seconds in the Polaron SC 502 Sputter Coater, and examined under a JEOL JSM 6060 Scanning Electron Microscope (SEM). At least ten eggs were examined for each species.

Results

Dioctria abdominalis Becker, 1923

Material examined: Mersin, Mut, Comelek village, Sason valley, 1045 m, 13.06.2007, 2♀.

Distribution: Turkey (Geller-Grimm, 2015), Iran (Lehr *et al.*, 2007; Mohammadi *et al.*, 2019)

Egg: ovoid and brown in color; width 0.35 ± 0.02 mm, length 0.40 ± 0.03 mm (Figure 1A); operculum diameter 100 μ m, situated at the anterior pole of the egg, with one micropyle; operculum and the body region of the egg demarcated by an eclosion line (Figure 1A, B); marginal region of the operculum furnished with the oval rings arranged in two to four rows, remaining part smooth (Figure 1B); egg surface densely covered by oval rings of various sizes (3-9 μ m in diameter) (Figure 1C, D); aeropyles found both in the operculum and body region (Figure 1D).

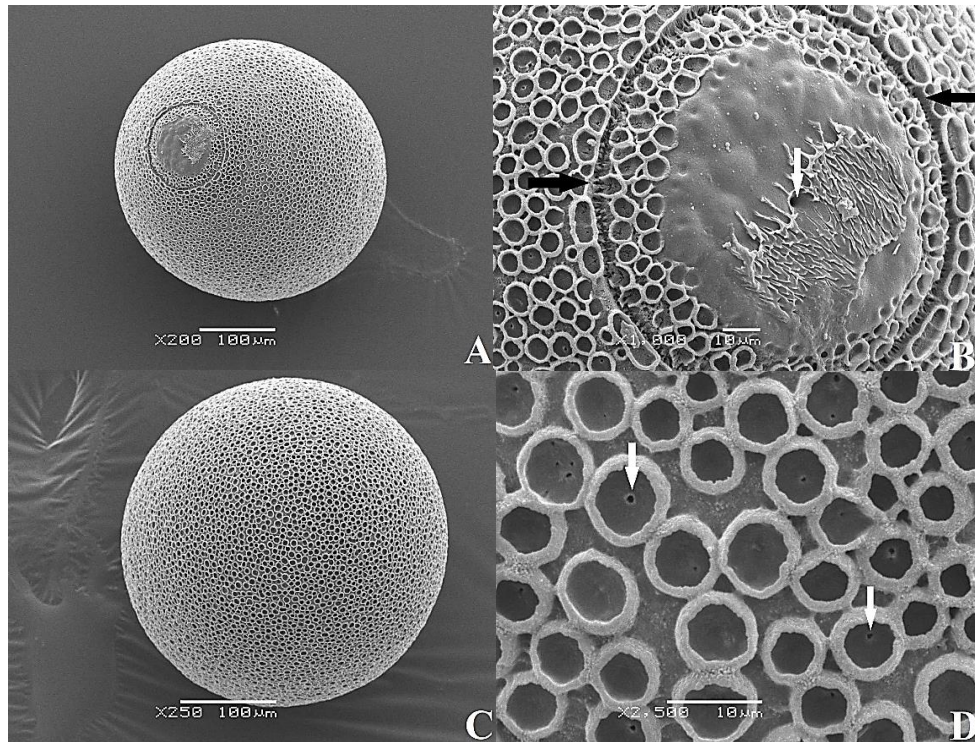


Fig. 1. *Dioctria abdominalis*, scanning electron microscopy of egg; **A.** General habitus, dorsal view; **B.** Operculum, eclosion line (black arrows), micropyle (white arrow); **C.** General habitus, lateral view; **D.** Enlargement of the body region of the egg, arrows showing the aeropyles.

Dioctria arcana Richter, 1966

Material examined: Mersin, Atlılar village, 1422 m, 08.06.2006, 2♀.

Distribution: Armenia (Geller-Grimm, 2015), Turkey (Bayrakdar & Hasbenli, 2009)

Egg: ovoid and brown; length slightly longer than width: width 0.33 ± 0.02 mm, length 0.44 ± 0.03 mm (Figure 2A); operculum diameter 140 μ m, situated at anterior pole, with one or two micropyles at the center; having smooth surface; the eclosion line absent (Figure 2A, B, C); egg surface densely covered with oval rings of various sizes (6-14 μ m in diameter) (Figure 2D, E); aeropyles present both in the operculum and body region of the egg (Figure 2E).

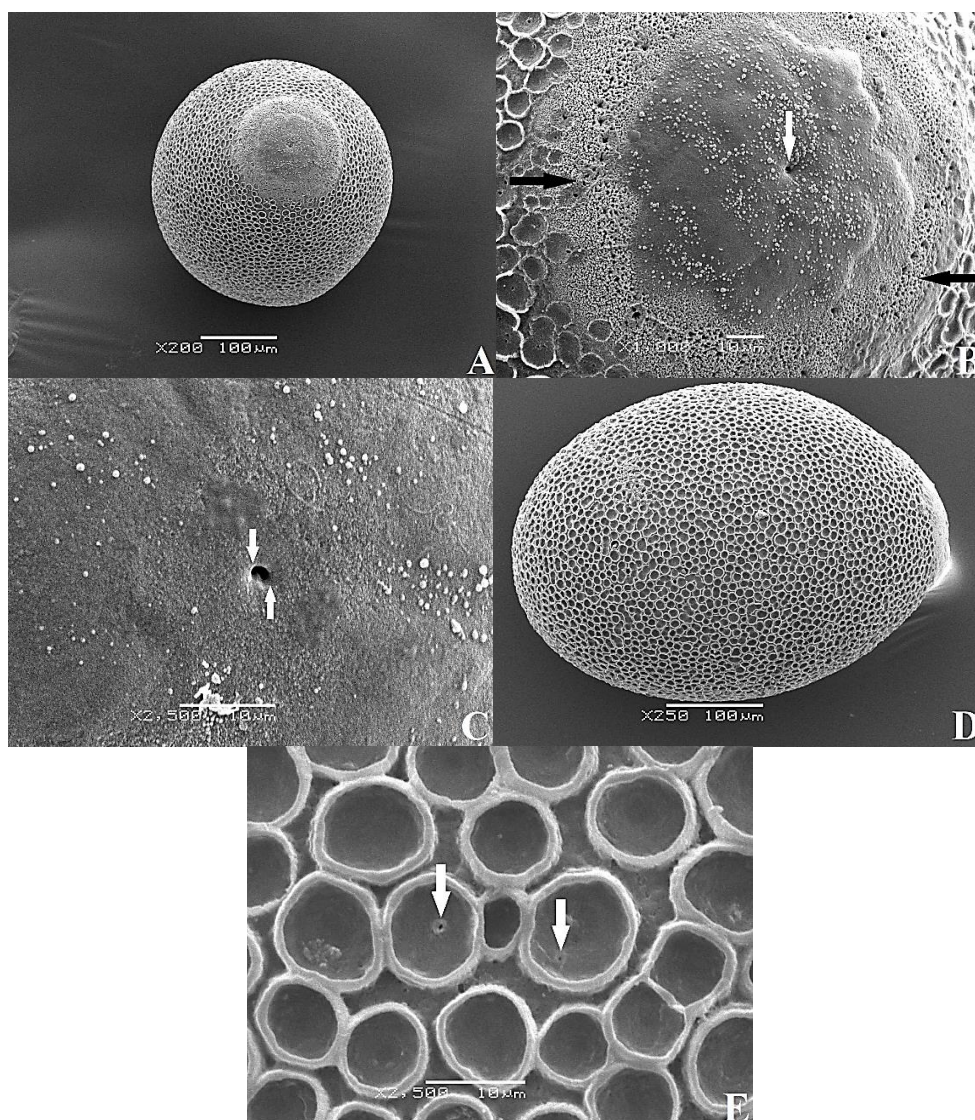


Fig. 2. *Dioctria arcana*, scanning electron microscopy of egg; **A.** General habitus, dorsal view; **B.** Operculum, (black arrows), micropyle (white arrow); **C.** Micropyles (arrows); **D.** general habitus, lateral view; **E.** Enlargement of the body region of the egg, arrows showing the aeropyles.

Dioctria cornuta Lehr, 2002

Material examined: Ankara, Ayas road, Atbeli, 1162 m, 08.06.2008, 2♀.

Distribution: Soviet Union (Lehr, 2002), Turkey (Bayrakdar, 2010, unpublished data)

Egg: ovoid and brown; width 0.38 ± 0.02 mm; length 0.55 ± 0.03 mm (Figure 3A); operculum diameter 130 μ m, situated at the anterior pole of the egg, having smooth surface; with two micropyles at the center; the eclosion line absent (Figure 3A, B, C); egg surface densely covered by oval rings of various sizes (4-10 μ m in diameter) (Figure 3D, E); aeropyles present both in the operculum and body region of the egg (Figure 3E).

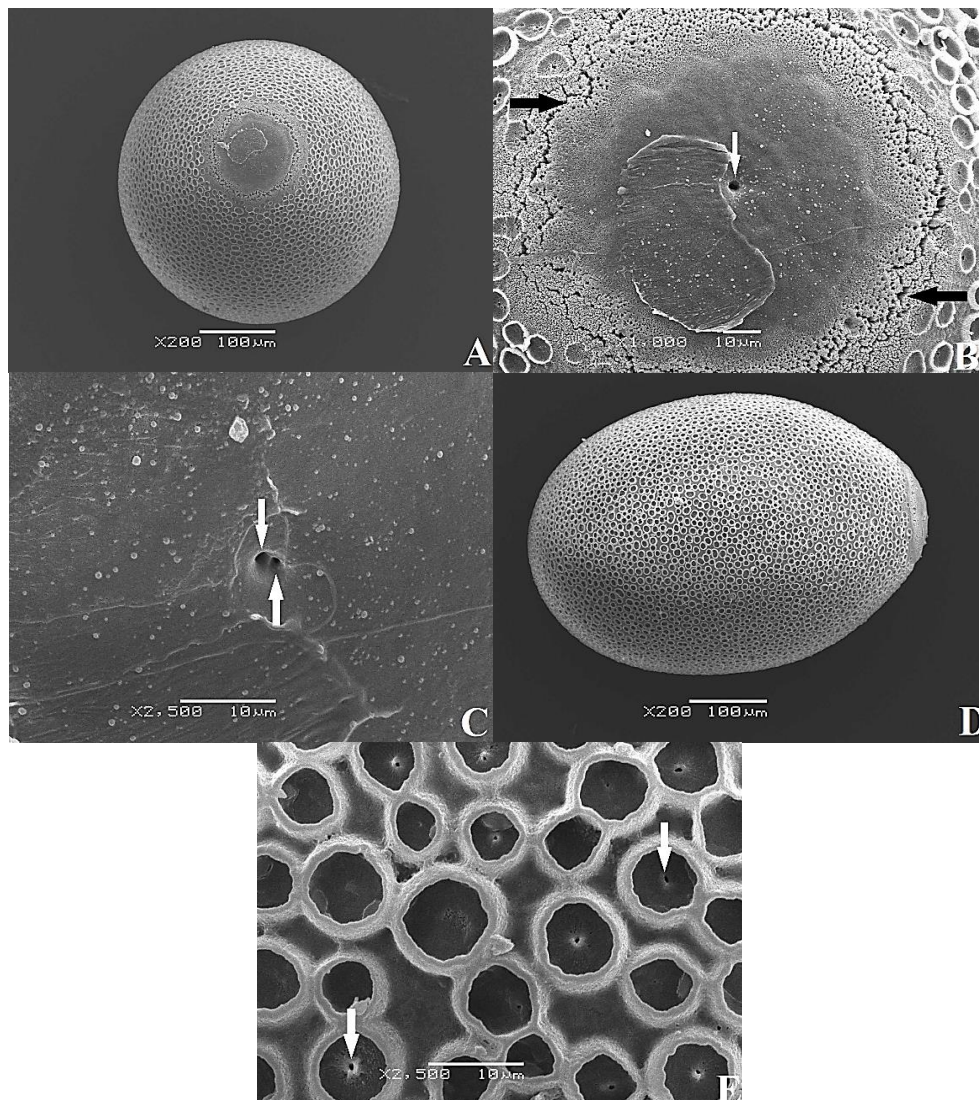


Fig. 3. *Dioctria cornuta*, scanning electron microscopy of egg; **A.** General habitus, dorsal view; **B.** Operculum (black arrows) and micropyle (white arrow); **C.** Micropyles (arrows); **D.** General habitus, lateral view; **E.** Enlargement of the body region of the egg, arrows showing the aeropyles.

***Dioctria flavipennis* Meigen, 1820**

Material examined: Nigde, Ulukisla, Darbogaz village, 1721 m, 06.06.2006, 2♀.

Distribution: Austria, Bulgaria, Byelorussia, China, Czech Republic, Estonia, France, Germany, Hungary, Kazakhstan, Kyrgyzstan, Latvia, Lithuania, Moldavia, Poland, Romania, Russia, Tajikistan, Turkey, Turkmenistan, Ukraine, Uzbekistan, West Siberia, (Geller-Grimm, 2015), Iran (Lehr *et al.*, 2007; Mohammadi *et al.*, 2019).

Egg: ovoid and brown; width 0.30 ± 0.02 mm and length 0.40 ± 0.03 mm (Figure 4A); operculum diameter 110 μ m; situated at the anterior pole, with one or two micropyles at the center separated by eclosion line, signaled by regularly arranged oval rings; marginal region of the operculum furnished with the grouped oval rings; (Figure 4A, B, C); egg surface

covered with oval rings of varying sizes (5-9 μm in diameter) (Figure 4D, E); aeropyles present both in the operculum and body region of the egg (Figure 4E).

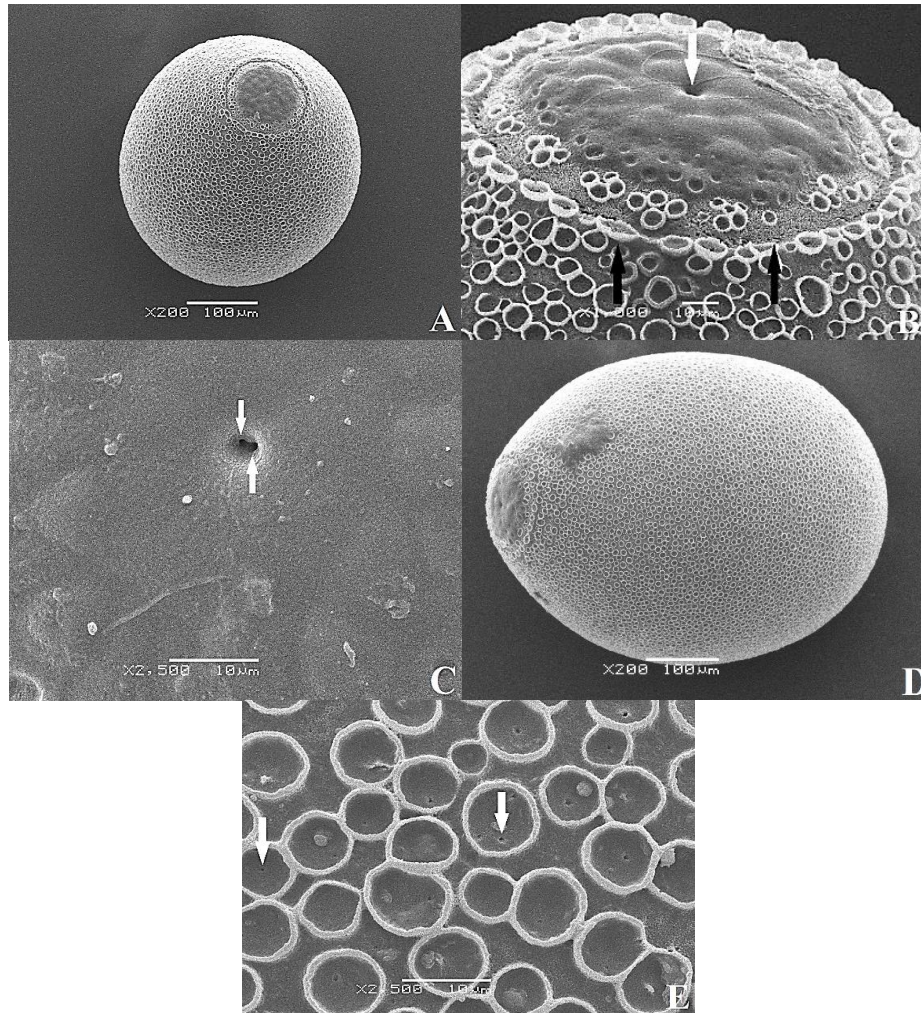


Fig. 4. *Dioctria flavipennis*, scanning electron microscopy of egg; **A.** General habitus, dorsal view; **B.** Operculum, eclosion line (black arrows), micropyle (white arrow); **C.** Micropyles (arrows); **D.** General habitus, lateral view; **E.** Enlargement of the body region of the egg, arrows showing the aeropyles.

Dioctria hermonensis Theodor, 1980

Material examined: Mersin, Mut, Mut-Ermenek road, Gezende dam, 353 m, 21.05.2007, 2♀.

Distribution: Israel (Geller-Grimm, 2015), Turkey (Bayrakdar, 2010, unpublished data)

Egg: ovoid and brown; width 0.35 ± 0.02 mm, length 0.40 ± 0.03 mm (Figure 5A); operculum diameter 100 μm ; situated at the anterior pole of the egg; with one micropyle at the center; eclosion line absent (Figure 5A, B); egg surface has polygonal pattern, most of which pentagonal (Figure 5C, D); polygons bounded by granules, smaller granules scattered inside

the polygons (Figure 5D); four to eleven aeropyles about 2 μm in diameter in each polygon (Figure 5D).

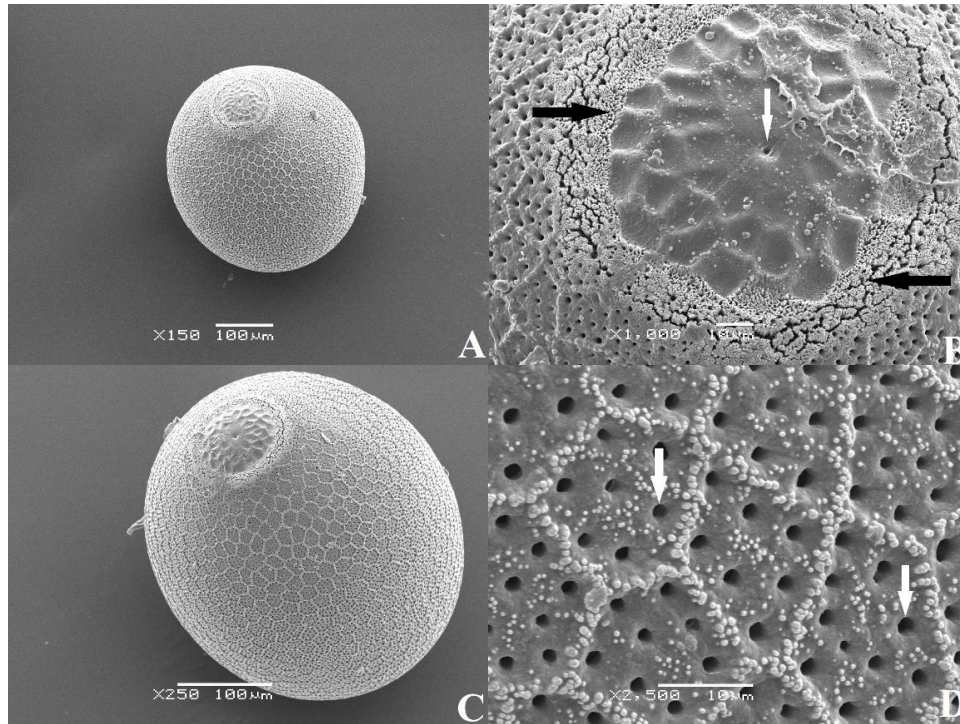


Fig. 5. *Dioctria hermonensis*, scanning electron microscopy of egg; **A.** General habitus, dorsal view; **B.** Operculum (black arrows), micropyle (white arrow); **C.** General habitus, lateral surface; **D.** Enlargement of the body region of the egg, arrows showing the aeropyles.

Dioctria linearis (Fabricius, 1787)

Material examined: Nigde, Ulukisla, Darbogaz-Pozanti road, 1281 m, 26.06.2007, 2♀.

Distribution: Austria, Belgium, Bulgaria, Czech Republic, Denmark, England, former Yugoslavia, France, Germany, Hungary, Italy, Luxembourg, The Netherlands, Poland, Romania, Russia, Switzerland (Geller-Grimm, 2015), Turkey (Bayrakdar, 2010, unpublished data)

Egg: ovoid and brown; width 0.30 ± 0.02 mm, length 0.40 ± 0.03 mm (Figure 6A). Operculum diameter 100 μm , situated at the anterior pole; with two micropyles at the center; marginal region furnished with grouped oval rings; eclosion line present (Figure 6A, B, C); egg surface covered by oval chorionic rings of various sizes (7-11 μm in diameter) (Figure 6C, E); aeropyles present both in the operculum and body region of the egg (Figure 6E).

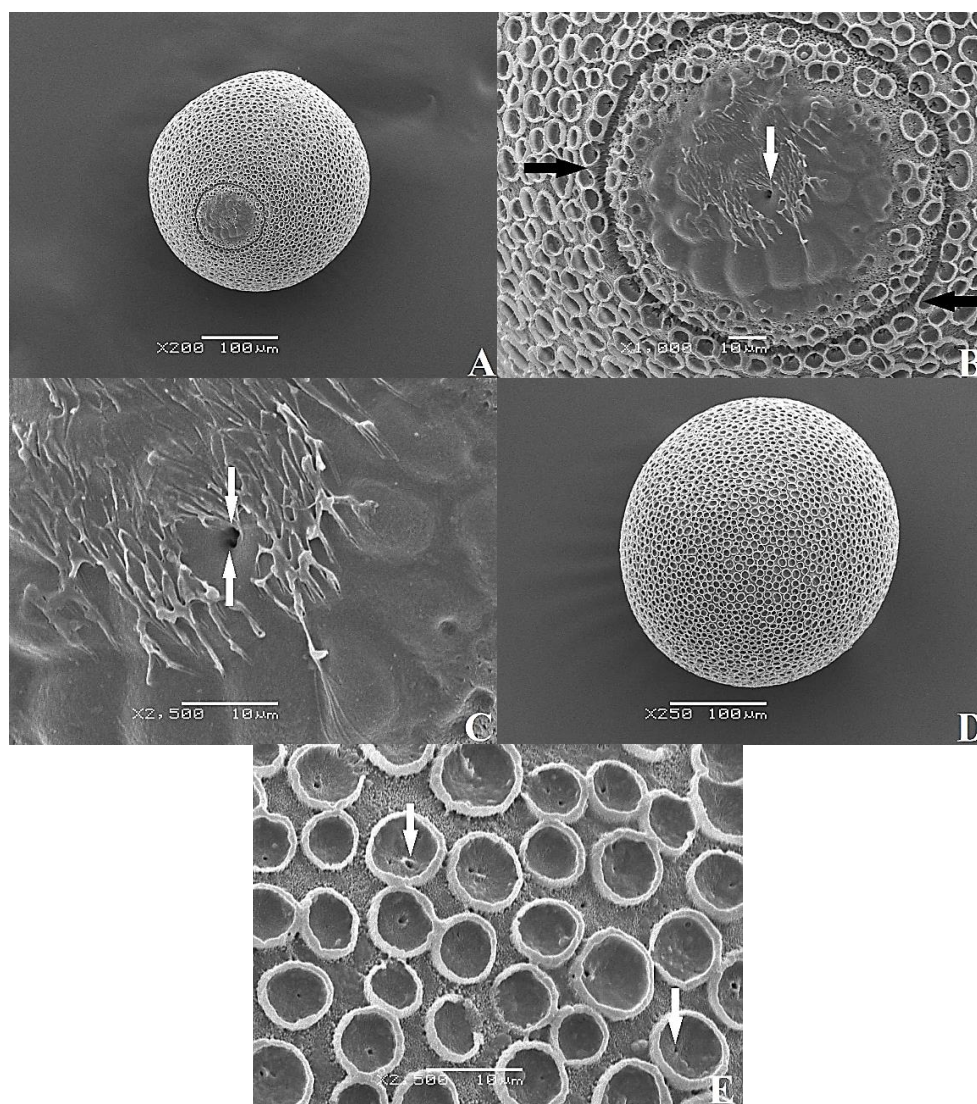


Fig. 6. A. SEM view of an egg of *Dioctria linearis*, scanning electron microscopy of egg; A. General habitus, dorsal view; B. Operculum, eclosion line (black arrows), micropyles (white arrow); C. Micropyles (arrows); D. General habitus, lateral view, E. Enlargement of the body region of the egg, arrows showing the aeropyles.

Dioctria sudetica Duda, 1940

Material examined: Kayseri, Yahyali, Burhaniye village, 1411 m, 18.05.2002, 2♀.

Distribution: Czech Republic, Slovakia, Poland, Austria, Denmark, The Netherlands, Italy (Geller-Grimm, 2015), Turkey (Bayrakdar, 2010, unpublished data)

Egg: ovoid and brown; width 0.30 ± 0.02 mm and length 0.40 ± 0.03 mm (Figure 7A); operculum diameter 115 μ m, situated at the anterior pole, with smooth surface; with two micropyles at the center; eclosion line absent (Figure 7A, B, C); egg surface covered with oval rings of various sizes (5-9 μ m diameter) (Figure 7D, E); aeropyles present both in the operculum and body region of the egg (Figure 7E).

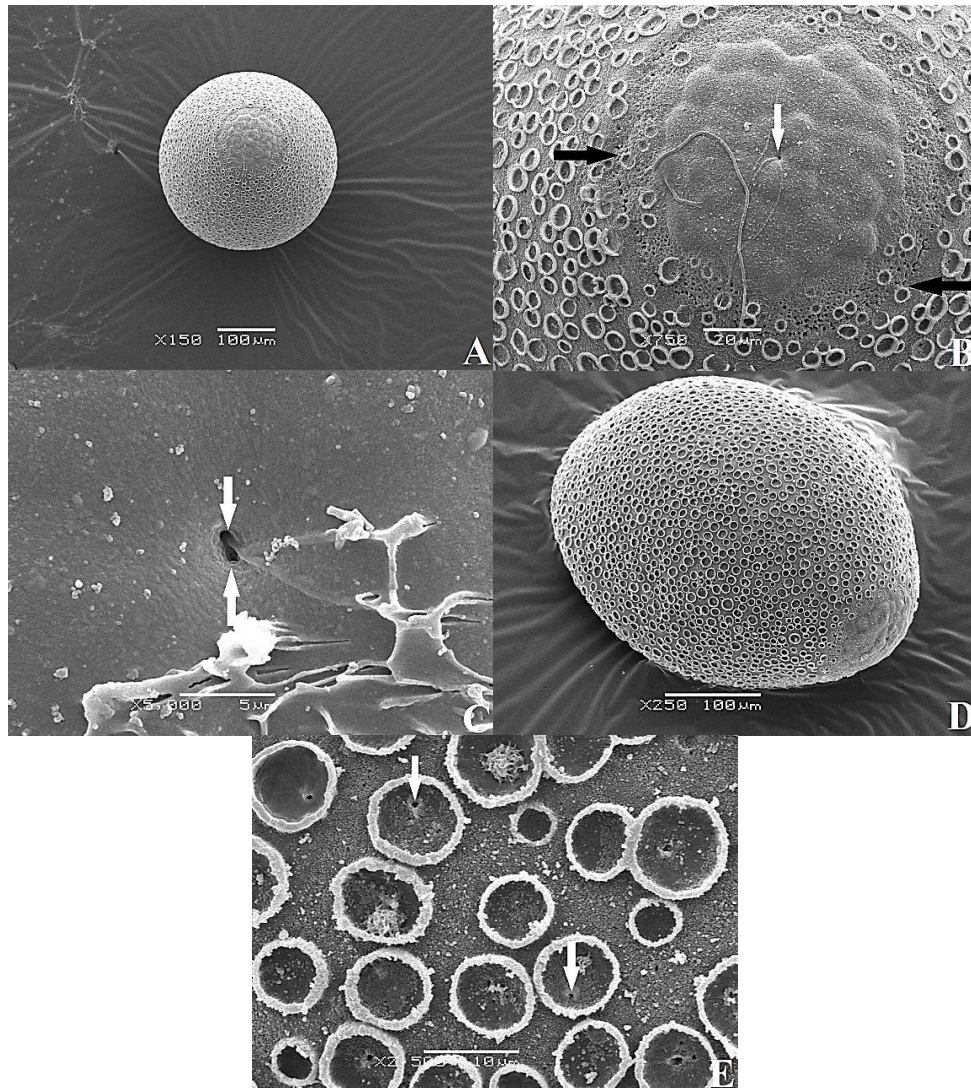


Fig.7. **A.** SEM view of an egg of *Dioctria sudetica*, scanning electron microscopy of egg; **A.** General habitus, dorsal view; **B.** Operculum (black arrows), micropyles (white arrow); **C.** Micropyles (arrows); **D.** General habitus, lateral view; **E.** Enlargement of the body region of the egg, arrows showing the aeropyles.

Dioctria valida Loew, 1856

Material examined: Mersin, Silifke, Kirobasi, 1403 m, 18.05.2006, 2♀.

Distribution: Israel, Lebanon, Syria, Turkey (Geller-Grimm, 2015), Iran (Lehr *et al.*, 2007; Mohammadi *et al.*, 2019).

Egg: ovoid and brown; width 0.40 ± 0.02 mm, length 0.50 ± 0.03 mm (Figure 8A); operculum diameter 150 μ m, situated at the anterior pole; with two micropyles are at the center; eclosion line absent (Figure 8A, B, C); egg surface is covered by numerous dimples, aeropyles (1 μ m in diameter) found in the dimples (Figure 8D, E).

Egg features of the *Dioctria* species known in Turkey shown in Table 1, in brief.

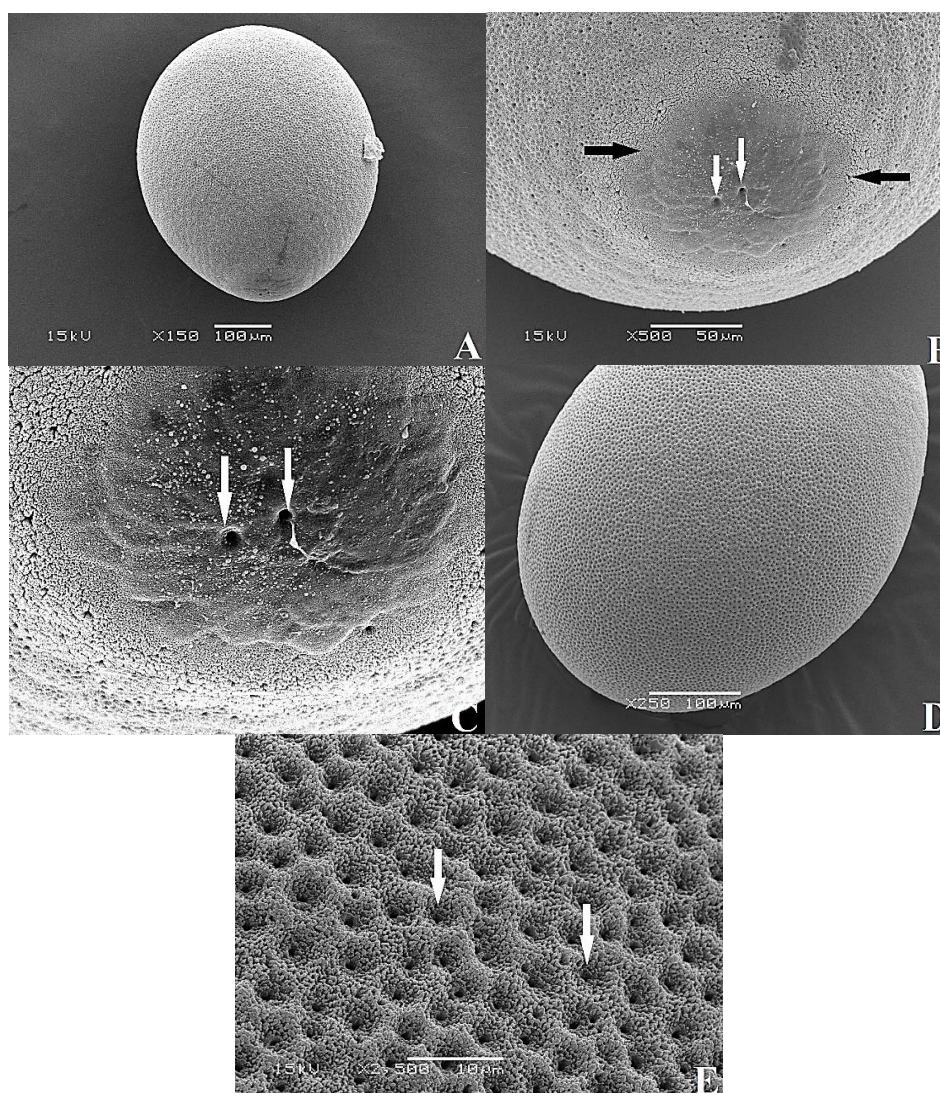


Fig. 8. *Dioctria valida*, scanning electron microscopy of egg; **A.** General habitus, dorsal view; **B.** Operculum (black arrows), micropyle (white arrow); **C.** Micropyles (arrows); **D.** General habitus, lateral view **E.** Enlargement of the body region of the egg, arrows showing the aeropyles.

Table 1. Egg features of the *Dioctria* species known in Turkey

| Species | Egg shape | Egg size (width/length) | Egg surface | Number of micropyles | Eclosion line |
|-----------------------|-----------|---------------------------------|---------------------|----------------------|---------------|
| <i>D. abdominalis</i> | ovoid | 0.35 ± 0.02 mm - 0.40 ± 0.03 mm | numerous oval rings | one | present |
| <i>D. arcana</i> | ovoid | 0.33 ± 0.02 mm - 0.44 ± 0.03 mm | numerous oval rings | one or two | absent |
| <i>D. cornuta</i> | ovoid | 0.38 ± 0.02 mm - 0.55 ± 0.03 mm | numerous oval rings | two | absent |
| <i>D. flavipennis</i> | ovoid | 0.30 ± 0.02 mm - 0.40 ± 0.03 mm | numerous oval rings | one or two | present |
| <i>D. hermonensis</i> | ovoid | 0.35 ± 0.02 mm - 0.40 ± 0.03 mm | polygonal pattern | one | absent |
| <i>D. linearis</i> | ovoid | 0.30 ± 0.02 mm - 0.40 ± 0.03 mm | numerous oval rings | two | present |
| <i>D. sudetica</i> | ovoid | 0.30 ± 0.02 mm - 0.40 ± 0.03 mm | numerous oval rings | two | absent |
| <i>D. valida</i> | ovoid | 0.40 ± 0.02 mm - 0.50 ± 0.03 mm | numerous dimples | two, rarely one | absent |

Discussion

The egg morphology of *Dioctria* species, known in Turkey, was described. The eggs of *Dioctria* are characterized as: ovoid in shape and brown in color; operculum at the anterior pole of the egg; one or two micropyles at the center of the operculum.

Egg surface of *D. abdominalis*, *D. arcana*, *D. cornuta*, *D. flavipennis*, *D. linearis*, and *D. sudetica* are densely covered with oval rings of various sizes. The operculum of *D. abdominalis*, *D. flavipennis*, and *D. linearis* is clearly defined from the body region of the egg by the eclosion line: the marginal region of the operculum is with the oval rings arranged in 2-4 rows or groups. Aeropyle openings are found both in operculum and in and between the oval rings.

Although the well-defined eclosion line is absent, the operculum is distinguishable from the body region of the egg also in *D. arcana* and *D. cornuta*, being devoid of oval rings. *D. hermonensis* eggs have a polygonal pattern, most of which are pentagonal. Polygons are bounded by the lined granules. There are 4-11 aeryples and numerous dots in each polygon. Surface of the operculum is with reticular ridge.

Surface of *D. valida* eggs is devoid of the oval rings but with numerous dimples, at the bottom of which the aeryple opens and the operculum is smooth.

Egg of *Dioctria* genus has thick, pigmented and ornamented chorion. There is a correlation between ovipositor type, oviposition behavior and oviposition side and egg morphology (Hinton, 1981). There are three oviposition strategies within the family Asilidae. Some genera such as *Laphria* (Laphriinae), *Leptogaster* (Leptogastrinae) and *Dioctria* (Dioctriinae) lay their eggs randomly amongst the herbs; therefore has thick chorion, some genera such as *Lasiopogon* and *Cyrtopogon* (Stichopogoninae) and Stenopogoninae bury eggs in sand or soil; and some genera such as *Dysmachus*, *Eutolmus* and *Rhadiurgus* (Asilinae) deposit their eggs on or in herbs. Stichopogoninae and Stenopogoninae deposite their eggs into the ground (Melin, 1923; Lehr, 1958, 1963; Oldroyd, 1966; Dennis & Lavigne, 1975, 1976; Hinton, 1981; Candan *et al.*, 2004a). Melin (1923) reported that eggs of *Dioctria* spp. are oval and reddish brown with a chorion covered with irregular bumps. According to Candan *et al.* (2004a), *D. flavipennis* eggs are ovoid and matt brown. Egg surface covered with cup-shaped rings of various sizes, and the micropyle is at the anterior pole of the egg.

Operculum serve as hatching site. At the hatching, the operculum opens along the eclosion line, and the larvae hatch out. According to Stubbs & Drake (2001), the larvae of most asilid species emerge through an irregular split made in the eggshell, whereas those of the genera such as *Dioctria* and *Laphria* that have the eggs with the hard shell hatch out with the opening of operculum.

Oxygen and moisture intake into the eggs are significant factors for embryonic development, and the chorions have various modifications to facilitate gas exchange and to

save moisture. In some genera like *Dioctria*, aeropyles scattered on surface of thick chorion allow respiratory exchange of oxygen and carbon dioxide with relatively small loss of water, and these genera usually lay their eggs randomly. Some genera, which have a thin chorion, deposit their eggs on or in herbs to prevent moisture loss (Melin, 1923; Candan *et al.*, 2004a, b).

In the present study, the egg morphology of *Dioctria* Meigen, 1803 from Turkey was examined and described in detail. The egg morphology was revealed to provide useful information to the systematics of asilids. The egg morphology of Asilidae is still little known, and further studies on it are needed.

Acknowledgments

We thank Prof. Dr. Abdullah Hasbenli and Prof. Dr. Selami Candan for their assistance with collecting insect samples from field.

References

- Bayrakdar, F. & Hasbenli, A.** (2009) Contribution to the geographic distribution of *Dioctria* Meigen, 1803 genus (Diptera, Asilidae). *Turkish Journal of Zoology* 33, 23-26.
- Bayrakdar, F.** (2010) Ultrastructural analysis of species of Turkish Dioctriinae (Diptera, Asilidae), Ph.D. Thesis, Institute of Science and Technology, Gazi University, Turkey.
- Bosák, J. & Hradský, M.** (2001) Some remarks on the distribution of robber flies (Diptera: Asilidae) in Turkey. *Journal of the Entomological Research Society* 3, 1-28.
- Candan, S., Suludere, Z., Hasbenli, A., Çağiran, N., Lavigne, R. & Scarbrough, A.** (2004a) Ultrastructure of the chorion of *Dioctria flavipennis* Meigen, 1820 (Diptera: Asilidae: Stenopogoninae) compared with those of fourteen asilid species from the mid-Atlantic region of North America. *Proceedings of the Entomological Society of Washington* 106 (4), 811-825.
- Candan, S., Suludere, Z., Kalender, Y. & Eryılmaz, Ö.** (2004b) Ultrastructure of the chorion of *Echthistus cognatus* (Loew, 1849) (Diptera, Asilidae). *Ohio Journal of Science* 104 (4), 93-96.
- Castillo, E. E., Jerez, V. & Artigas, J. N.** (1994) Microescultura corionica en huevos de Asilidae (Diptera Asilinae, Dasyopogoninae, Laphriinae Y Stenopogoninae). *Boletín de la Sociedad de Biología de Concepción Chile* 65, 107-116.
- Dennis, D. S. & Lavigne, R. J.** (1976) Ethology of *Efferia varipes* with comments on species coexistence (Diptera: Asilidae). *Journal of the Kansas Entomological Society* 49, 48-62.
- Dennis, D. S. & Lavigne, R. J.** (1975) Comparative behavior of Wyoming robber flies II (Diptera, Asilidae), *University of Wyoming Agricultural Experiment Station Science Monograph* 30, 1-68.
-

- Dikow, T.** (2009) Phylogeny of Asilidae inferred from morphological characters of imagines (Insecta: Diptera: Brachycera: Asiloidea). *Bulletin of the American Museum of Natural History* 319, 1-175.
- Duda, O.** (1940) Neue oder ungenügend bekannte zweiflügler der paläarktischen region aus meiner Sammlung. *Folia Zoologica et Hydrobiologica* 10 (2), 398-407.
- Dutra, V., Ronchi-Teles, B., Steck, G., Silva, J.** (2013) Description of eggs of *Anastrepha curitis* and *Anastrepha leptozona* (Diptera: Tephritidae) using SEM. *Annals of the Entomological Society of America* 106, 13-17.
- Engel, E. O.** (1926) Asilidae. in Lidner, E. (Ed) *Die Fliegen der palaearktischen region*, 491 pp, Stuttgart.
- Esipenko, P. A.** (1971) New species of robber flies of genus *Dioctria* Meig. (Diptera, Asilidae) of fauna of Far East. *Sbornik Trudov Dal'nevostochnyi Nauchno-Issledovatel'skii Instytut Lesnogo Khoziaistva* 11, 192-202 (in Russian).
- Geller-Grimm, F.** (2003) *Identification key to the Dioctria species, photographic atlas and identification key to the robber flies of Germany*, Ampyx-Verlag, Halle (Saale), CD-ROM.
- Geller-Grimm, F.** (2015) Robber flies [online]. Website www.geller-grimm.de/catalog/species.htm. (accessed 12 May 2015).
- Hasbenli, A., Candan, S. & Alpay, N.** (2006) A new species of *Leptogaster* Meigen (Diptera, Asilidae) from Turkey with egg and spermatheca structure. *Zootaxa* 1267, 49-57.
- Hasbenli, A., Suludere, Z., Candan, S. & Bayrakdar, F.** (2008) Chorionic structure of the eggs of five Laphriinae species (Diptera: Asilidae) from Turkey. *Journal of the Entomological Research Society* 10 (3), 47-60.
- Hayat, R. & Alaoglu, Ö.** (1994) Erzurum ve çevre illerindeki Asilidae (Diptera) türleri üzerinde faunistik ve sistematik çalışmalar, I. Laphriinae ve Stenopogoninae, *Türkiye 3. Biyolojik Mücadele Kongresi*, 25-28 Ocak, İzmir, 123-135.
- Hinton, H. E.** (1969) Respiratory systems of insect eggshells. *Annual Review of Entomology* 14, 343-368.
- Hinton, H. E.** (1970) *Insect egg shells*. 223 (2), 93-81. Scientific American.
- Hinton, H. E.** (1981) *Biology of insect eggs*. Oxford, Pergamon Press, 1125 pp.
- Hradský, M. & Moucha, J.** (1964) Raubfliegen (Diptera, Asilidae) Bulgariens. *Acta Faunistica Entomologica Musei Nationalis Pragae* 10, 23-30.
- Janssens, E.** (1968) Asilidae de Turquie et Regions Voisines (Deuxieme Note). *Bulletin Institut royal des sciences naturelles de Belgique* 44 (33), 1-8.
- Kučerová, Z. & Stejskal, V.** (2002) Comparative egg morphology of Silvanid and Laemophloeid beetles (Coleoptera) occurring in stored products. *Journal of Stored Products Research* 38, 219-227.
-

- Kučerová, Z., & Stejskal, V.** (2010) External egg morphology of two stored-product anobiids, *Stegobium paniceum* and *Lasioderma serricorne* (Coleoptera: Anobiidae). *Journal of Stored Products Research* 46, 202-205.
- Lavigne, R. J. & Bullington, S. W.** (1984) Ethology of *Laphria fernaldi* (Back.) (Diptera: Asilidae) in southwest Wyoming. *Proceedings of the Entomological Society of Washington* 86 (2), 326-336.
- Lawson, F. A. & Lavigne, R. J.** (1984) Oviposition and eggs of an Australian robber fly, *Neoratus abludo* Daniels (Diptera: Asilidae). *Proceedings of the Entomological Society of Washington* 86 (4), 773-776.
- Lehr, P. A.** (1958) Materials on the biology of *Promachus leontochlaenus* Loew (Diptera, Asilidae). *Trudy Instituta Zoologii Akademii Nauk Kazakhskoi SSR* 4, 210-224.
- Lehr, P. A.** (1963) A review of the robber flies (Diptera: Asilidae) of the genus *Stenopogon* [Loew]. *Trudy Instituta Zoologii Akademii Nauk Kazakhskoi SSR* 21, 96-141 (In Russian).
- Lehr, P. A.** (1965) Robber-Flies of the tribe Dioctriini of Kazakhstan and Middle Asia. *Trudy Instituta Zoologii Akademii Nauk Kazakhskoi SSR* 9, 184-199 (In Russian).
- Lehr, P. A.** (1988) Family Asilidae. pp. 197-326 in Soos, A. (Ed) *Catalogue of Palaearctic Diptera, Athericidae-Asilidae*. Académiai Kiadó, Budapest.
- Lehr, P. A.** (2002) Robber flies of the Subfamily Dioctriinae Hull (Diptera, Asilidae) of Asia. II. Taxonomy and Ecology. *Entomological Review* 82, 797-808.
- Lehr, P. A., Ghahari, H., Ostovan, H.** (2007) A Contribution to the Robber Flies of Subfamilies Stenopogoninae and Asilinae (Diptera: Asilidae) from Iran. *Far Eastern Entomologist* 173: 1-14.
- McAlpine, J. F.** (1981) Morphology and terminology - Adults. 27: 9-63 in McAlpine, J. F., Peterson, B. V., Shewell, G. E., Teskey, H. J., Vockeroth, J. R. & Wood, D. M. (Eds.) *Manual of nearctic Diptera*, Vol. 1. Ottawa: Research Branch. Agriculture Canada Monograph.
- Melin, D.** (1923) Contribution to the knowledge of the biology, metamorphosis and distribution of the Swedish asilids. *Zoologisk Bidrag från Uppsala* 8, 1-317.
- Mohammadi, R., Talebi, A. A., Fathipour, Y., Kazerani, F. & Van Den Broek, R.** (2019) Review of the genus *Dioctria* Meigen, 1803 (Diptera Asilidae) from Iran, with four new species records for the Iranian fauna. *Redia* 102, 3-11.
- Moucha, J. & Hradský, M.** (1963) Zur Kenntnis der Raubfliegen vom Kaukasus und Zentralasien Nebst Beschreibung Dreier Neuer Arten (Diptera, Asilidae). *Acta Faunistica Entomologica Musei Nationalis Pragae* 35, 373-380.
- Musso, J. J.** (1981) Morphology and development of the immature stages of some robber flies (Diptera: Brachycera: Asilidae). *Entomologia Generalis* 7 (1), 89-104.
-

- Oldroyd, H.** (1966) *The Natural history of flies*, London. WW Norton Company 17: 119-130.
- Richter, V. A.** (1960) New species of robber flies (Diptera, Asilidae) from Transcaucasia. *Doklady Akademii Nauk Armyan SSR* 31, 245-249 (in Russian).
- Richter, V. A.** (1966) New and little known genera and species of robber flies (Diptera, Asilidae) in the fauna of the USSR. *Entomological Review* 45, 224-230.
- Richter, V. A.** (1968) The predacious robber flies (Diptera, Asilidae) of the Caucasus. *Opredivitel po faune SSSR* 97, 1-284 (in Russian).
- Richter, V. A.** (1973) Two new species of Robber-Flies (Diptera, Asilidae) from the Caucasus. *Doklady Akademii Nauk Armyan SSR* 57, 108-111 (in Russian).
- Richter, V. A.** (1988) *Keys to the Insects of the European Part of the USSR*. Volume V. Diptera and Siphonoptera. Part II. Smithsonian Institution Libraries and The National Science Foundation Washington, D.C. 779-819.
- Salkeld, E. H.** (1983) A catalogue of the eggs of some Canadian Geometridae (Lepidoptera), with comments. *Memoirs of the Entomological Society of Canada* 126, 3-271.
- Salkeld, E. H.** (1984) A catalogue of the eggs of some Canadian Noctuidae (Lepidoptera). *Memoirs of the Entomological Society of Canada* 127, 1-167.
- Scarborough, A. G.** (1978) Ethology of *Cerotainia albipilosa* Curran (Diptera: Asilidae) in Maryland: Mating, courtship and oviposition. *Proceedings of the Entomological Society of Washington* 80, 179-190.
- Séguy, E.** (1927) Faune de France 17: *Diptères-Asilidae*, Lechevalier, Paris 95-107.
- Séguy, E.** (1929) Étude systématique d'une collection de Diptères d'Espagne formée par le Longin R. P. & Navas, S. J. *Memorias De La Sociedad Entomologica de Espana*, 9-10.
- Séguy, E.** (1941) Diptères recueillis par M. L. Berland dans le Sud-Marocain W. *Annales de la Société entomologique de France* 110, 1-23.
- Stubbs, A. E. & Drake, M.** (2001) *British soldierflies and their allies. An illustrated guide to their identification and ecology, covering all flies (Diptera) in the families Acroceridae, Asilidae, Athericidae, Bombyliidae, Rhagionidae, Scenopinidae, Stratiomyidae, Tabanidae, Therevidae, Xylomyidae and Xylophagidae*. 512 pp. British Entomological and Natural History Society, Reading.
- Suludere, Z., Candan, S., Kalender, Y. & Hasbenli, A.** (2000) Ultrastructure of the chorion of *Machimus rusticus* (Meigen, 1820) (Diptera, Asilidae). *Journal of the Entomological Research Society* 2 (2), 63-71.
- Theodor, O.** (1980) Fauna Palaestina-Insecta II-Diptera: Asilidae, Jerusalem: *The Israel Academy of Science and Humanities* 232-258.
- Weinberg, M. & Hayat, R.** (1997) Asilidae (Diptera) recorded in Turkey. *Travaux du Muséum National d'Histoire Naturelle 'Grigore Antipa'* 39, 161-168.